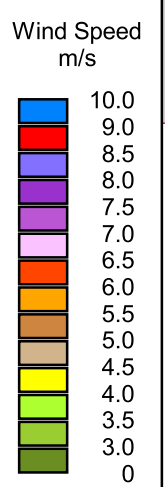
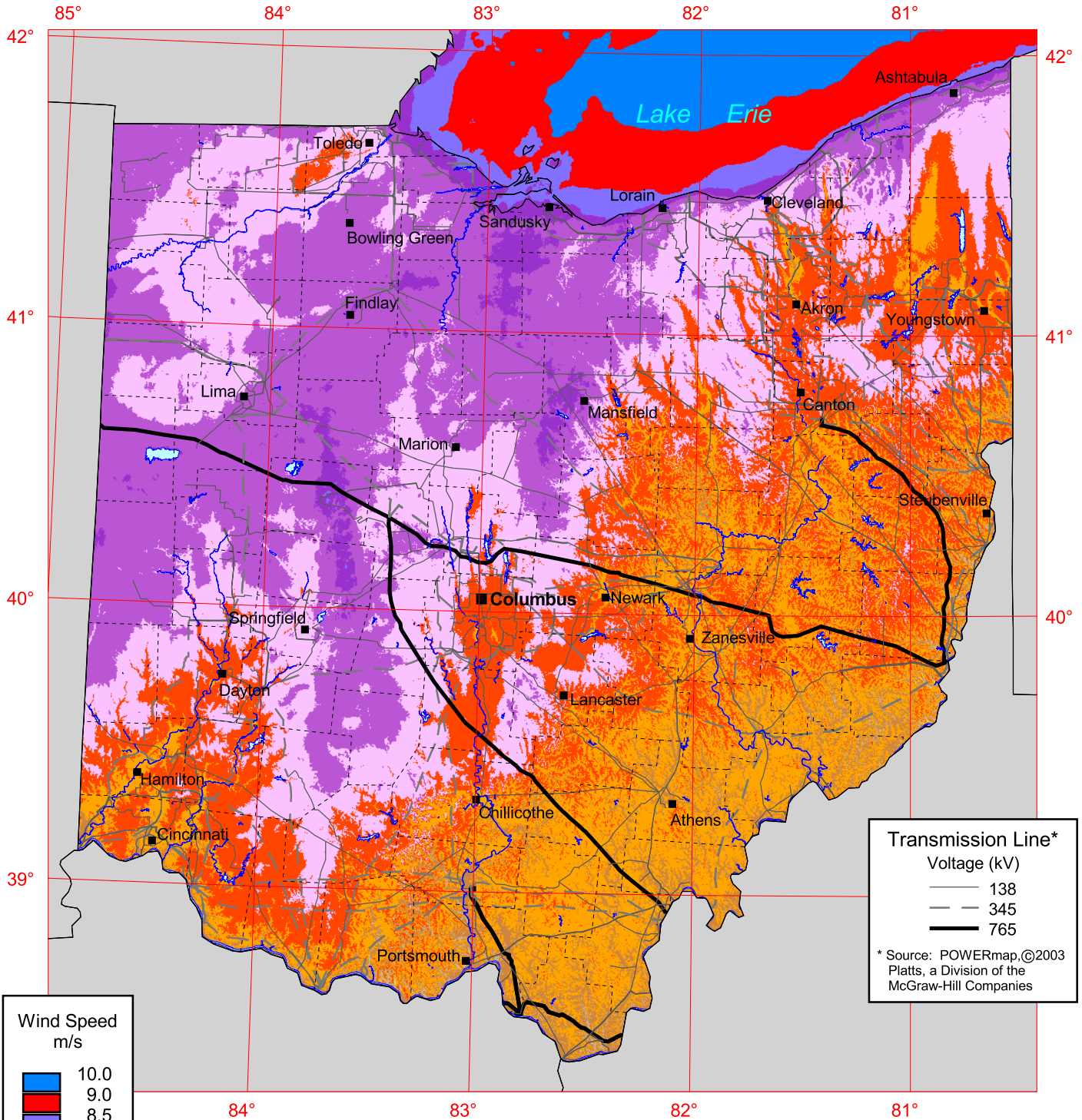


# Ohio - Annual Average Wind Speed Estimates at 100-m Height

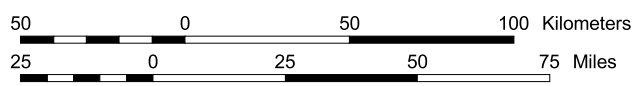


Total wind energy potential from windy lands (7.2 m/s and greater) = 66,000 MW (land-based development only).

Sensitive environmental lands, urban areas, airports, and water bodies (such as Lake Erie) are excluded.

**Transmission Line\***  
Voltage (kV)  
— 138  
- - 345  
— 765

\* Source: POWERmap, ©2003 Platts, a Division of the McGraw-Hill Companies



U.S. Department of Energy  
National Renewable Energy Laboratory